



JUSTEM CO., LTD.

T. 031-982-3319

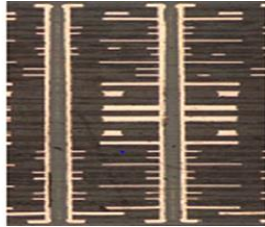
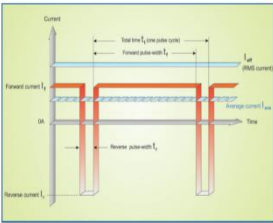
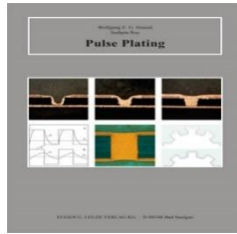
F. 031-982-6319

Mail : office@justemkorea.com

www.justemkorea.com



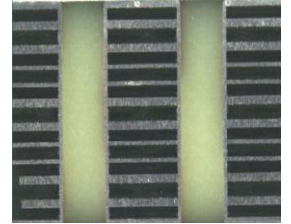
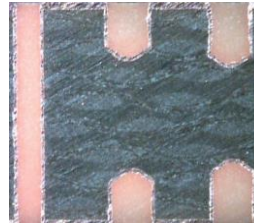
- ▣ 장비명 : 정류기
- ▶ DC & PULSE RECTIFIER
- ▶ ORIGIN : GERMANY



www.plating.de



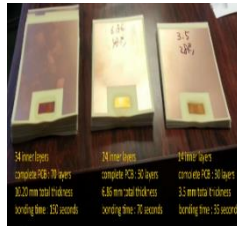
- ▣ 장비명 : 홀플러깅
- ▶ PLUGGING, SPRAY COATER
- ▶ ORIGIN : GERMANY



www.itc-intercircuit.de



- ▣ 장비명 : 펄스 본딩기
- ▶ HIGH SPEED & 고다층용
- ▶ ORIGIN : ITALY



www.dallco.net



- ▣ 장비명 : 노광기
- ▶ UV LED & DI & ROLL TO ROLL
- ▶ ORIGIN : FRANCE



www.altix.fr



JUSTEM CO., LTD.

T. 031-982-3319

F. 031-982-6319

Mail : office@justemkorea.com

www.justemkorea.com



- ▣ 장비명 : WET LINE
- ▶ CLEVERSTAR & SES LINE
- ▶ ORIGIN : ITALY



- ▣ 장비명 : INKJET PRINTER
- ▶ MARKING & SOLDER MASK
- ▶ ORIGIN : CHINA

CLEVERSTAR



ETCHSTAR



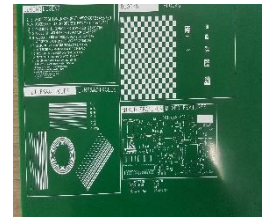
DEVSTAR



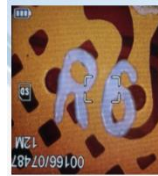
OSP LINE



www.wisecompany.it



Sample: Fine test, filled area, edge of line (50x)



www.jatotek.cn



- ▣ 장비명 : 신뢰성 테스트 장비
- ▶ PCB 오염도 테스트
- ▶ ORIGIN : U.K

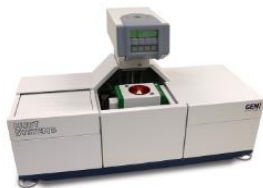


- ▣ 장비명 : 노광기 램프
- ▶ 5KW, 8KW, 10KW
- ▶ ORIGIN : U.S.A/CHINA

CM+ Series



MUST 3



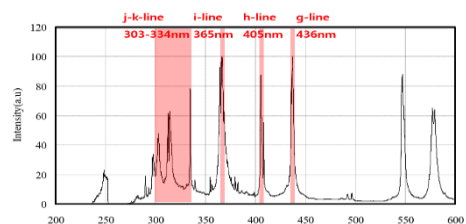
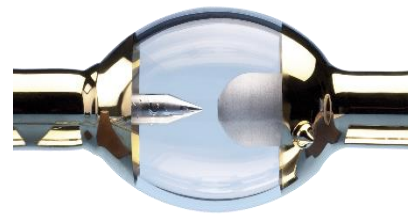
SPA 1000



AutoCAF2+



www.gen3systems.com



www.aslamps.com



저스텍코리아

