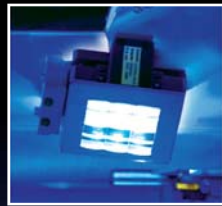
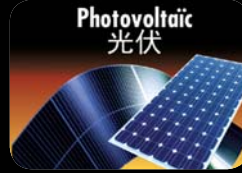
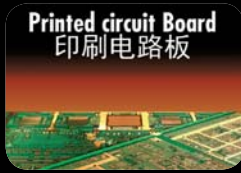
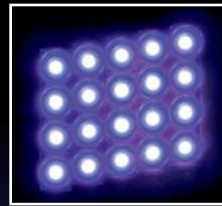


# AFOSAie

## Semi-Automatic UV Exposure Solution



Collimated Light™



LEDLight™



Best Cost Performance Solution for Small & Medium Production

Registration :

$\pm 25\mu\text{m}$   
AW/Panel

Resolution :

$15\mu\text{m}$   
(L/S)

Throughput :

2500  
panels/day

Cost

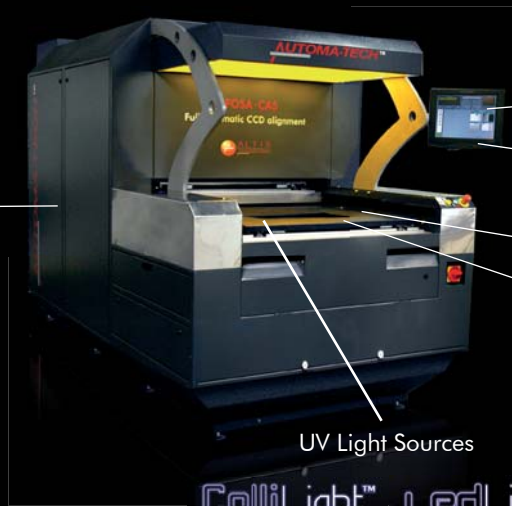
>80%  
Saving

# AFOSAie Semi-Automatic UV Exposure

## UV LED



ALTIX's UV LED Technology for highest Performances



ColliLight™ LedLight™

ALTIX Imaging Suite™  
Intuitive software

Easy Operating  
Quick Batch Change

Cost Saving  
UV Led Solution  
No down time

Low Maintenance  
Cost

UV Light Sources

## AFOSAie Specifications

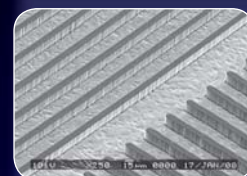
<b>APPLICATION</b>	<b>PCB • FPC • Metal Etching • PV</b>	
<b>Process</b>	Inner Layer • Outer Layer	
<b>Exposure area</b>	Up to 610mm x 762mm (24" x 30")	
<b>Panel Thickness</b>	0.05 to 4mm • up to 6mm (Optional)	
<b>RESOLUTION</b>	<b>15µm/15µm (L/S) <sup>(1)</sup></b>	
<b>Light Engine</b>	<b>ColliLight™ 5kW</b>	<b>LedLight™</b>
<b>Intensity</b>	≥ 25mW/cm <sup>2</sup>	≥ 30mW/cm <sup>2</sup>
<b>Collimation</b>	≤ 1.5°	≤ 1.6°
<b>Declination</b>	1°	No Declination
<b>Uniformity <sup>(2)</sup></b>	≥ 85%	≥ 85%
<b>Exposure method</b>	Soft or Hard contact with vacuum	
<b>ALIGNMENT</b>	<b>±15µm for Top/Bottom registration • ±5µm Repeatability ±20µm for Artwork to Panel (holes or pads)</b>	
<b>CCD Cameras</b>	2 to 4 cameras	
<b>Lighting</b>	Special lighting for hole and pad detection	
<b>THROUGHPUT</b>	<b>Up to 2 images/minute<sup>(3)</sup></b>	
<b>Batch change</b>	≤ 3 minutes (Artwork & Settings change)	
<b>SOFTWARE</b>	<b>ALTIX SUITE with 15" touch screen</b>	
<b>Languages</b>	All languages available: English, Simplified & Traditional Chinese, Korean, French,...	
<b>ENVIRONMENT CONTROL</b>		
<b>Air cleanliness</b>	Hepa filter class 100	
<b>Artworks</b>	No Artwork expansion with Led Source	
<b>GENERAL UTILITIES</b>	<b>ColliLight™</b>	<b>LedLight™</b>
<b>Power Supply</b>	220/400/480V • 3 Phases • 50/60Hz	
<b>Air Supply</b>	6~7 bars with 1.5m <sup>3</sup> /min	
<b>Power Consumption</b>	7.5kW	3kW
<b>Water Supply</b>	20-30 l/min @3 bars • 20-46 l/min @2 bars	No water needed
<b>UV source Cooling</b>	Air cooled / Close Loop Lamp Cooling (CLLC)	Hot air extraction
<b>Machine Weight</b>	2,000kg	1,600kg
<b>Dimension (mm)</b>	3,677 (L) x 1,640 (W) x 2,125 (H)	2,500 (L) x 1,640 (W) x 2,125 (H)

(1) Depend on the process parameters • (2) The formula is Min/Max • (3) Depending on the process

AFOSAie's specifications are subject to change without prior notice



Best Cost-Performance  
efficiency with UV Led  
Solution



High Resolution:  
15µm (L/S)



High Throughput:  
≥ 2,500 panels/day



High Registration:  
± 15µm



Quick Batch change:  
≤ 3 minutes



High Production  
Flexibility:  
Double batch function  
QTA, Samples, R&D



27100 Val de Reuil - France  
Tel : +33(0)2 32 63 36 36  
Fax : +33(0)2 32 63 36 37  
Email : central@altix.fr



Imaging with us!

www.altix.fr